

**Annexin A2 Antibody**  
**Rabbit mAb**  
**Catalog # AP91291****Specification**

---

**Annexin A2 Antibody - Product Information**

Application	WB, IHC, FC, ICC
Primary Accession	<a href="#">P07355</a>
Reactivity	Rat
Clonality	Monoclonal

**Other Names**

Annexin A2; Annexin II; Annexin-2; Calpactin I heavy chain; PAP-IV; Protein I; p36; ANXA2; ANX2; ANX2L4; CAL1H; LPC2D; Annexin2; HEL S 270;

Isotype	Rabbit IgG
Host	Rabbit
Calculated MW	38604 Da

**Annexin A2 Antibody - Additional Information**

Dilution	WB~~1:1000 IHC~~1:100~500 FC~~1:10~50 ICC~~N/A
Purification	Affinity-chromatography
Immunogen	A synthesized peptide derived from human Annexin A2
Description	Originally identified as a protein inhibitor of phospholipase A2, annexin A2 has subsequently been shown to interact with an array of protein and non-protein partners, including F-actin, spectrin, SNARE complexes, RNA, and virus particles.
Storage Condition and Buffer	Rabbit IgG in phosphate buffered saline , pH 7.4, 150mM NaCl, 0.02% sodium azide and 50% glycerol. Store at +4°C short term. Store at -20°C long term. Avoid freeze / thaw cycle.

**Annexin A2 Antibody - Protein Information****Name** ANXA2**Synonyms** ANX2, ANX2L4, CAL1H, LPC2D**Function**

Calcium-regulated membrane-binding protein whose affinity for calcium is greatly enhanced by anionic phospholipids. It binds two calcium ions with high affinity. May be involved in heat-stress

response. Inhibits PCSK9-enhanced LDLR degradation, probably reduces PCSK9 protein levels via a translational mechanism but also competes with LDLR for binding with PCSK9 (PubMed:<a href="http://www.uniprot.org/citations/18799458" target="\_blank">18799458</a>, PubMed:<a href="http://www.uniprot.org/citations/22848640" target="\_blank">22848640</a>, PubMed:<a href="http://www.uniprot.org/citations/24808179" target="\_blank">24808179</a>). Binds to endosomes damaged by phagocytosis of particulate wear debris and participates in endosomal membrane stabilization, thereby limiting NLRP3 inflammasome activation (By similarity). Required for endothelial cell surface plasmin generation and may support fibrinolytic surveillance and neoangiogenesis (By similarity).

#### Cellular Location

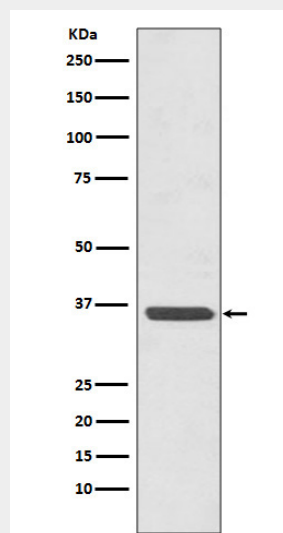
Secreted, extracellular space, extracellular matrix, basement membrane. Melanosome. Note=In the lamina beneath the plasma membrane. Identified by mass spectrometry in melanosome fractions from stage I to stage IV. Translocated from the cytoplasm to the cell surface through a Golgi-independent mechanism

### Annexin A2 Antibody - Protocols

Provided below are standard protocols that you may find useful for product applications.

- [Western Blot](#)
- [Blocking Peptides](#)
- [Dot Blot](#)
- [Immunohistochemistry](#)
- [Immunofluorescence](#)
- [Immunoprecipitation](#)
- [Flow Cytometry](#)
- [Cell Culture](#)

### Annexin A2 Antibody - Images



Western blot analysis of Annexin A2 expression in HeLa cell lysate.